

# **Kansas City Public Schools and Department of Elementary and Secondary Education**

May 25, 2017



# Summer School Instruction Plans

Dr. Derald Davis



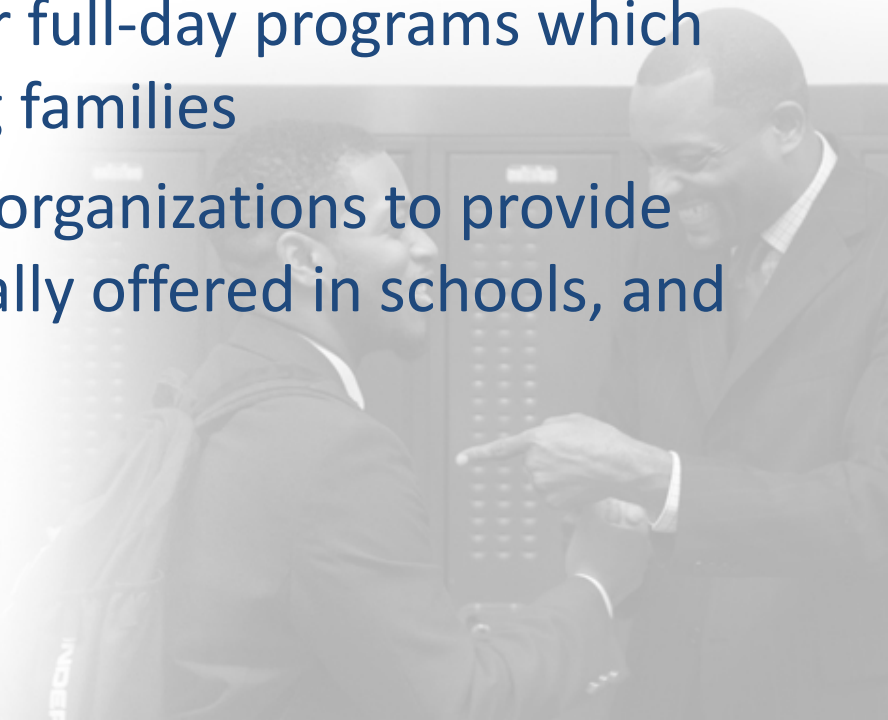
# What We Know:

- Summer learning loss disproportionately affects low-income students
- Summer learning loss contributes substantially to the achievement gap in reading
- Summer school programs can mitigate summer learning losses and even lead to gains



# What We Do:

- Offer a wide variety of enrichment and credit recovery programs to attract students
- Provide transportation and offer full-day programs which better suit the needs of working families
- Partner with community-based organizations to provide enrichment beyond those typically offered in schools, and to lower costs

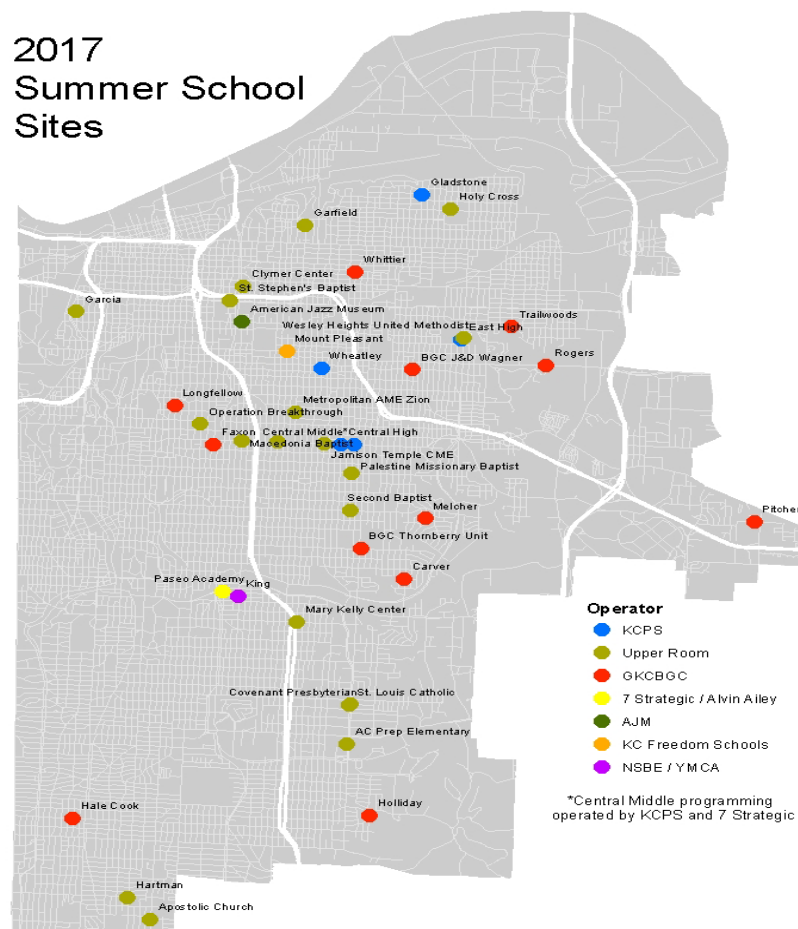


# Summer School Enrollment:

	2015	2016	2017*
Enrollment on May 26th	7051	6165	6164
Enrollment High	7594	8473	N/A

*\*Enrollment as of May 19, 2017*

2017  
Summer School  
Sites

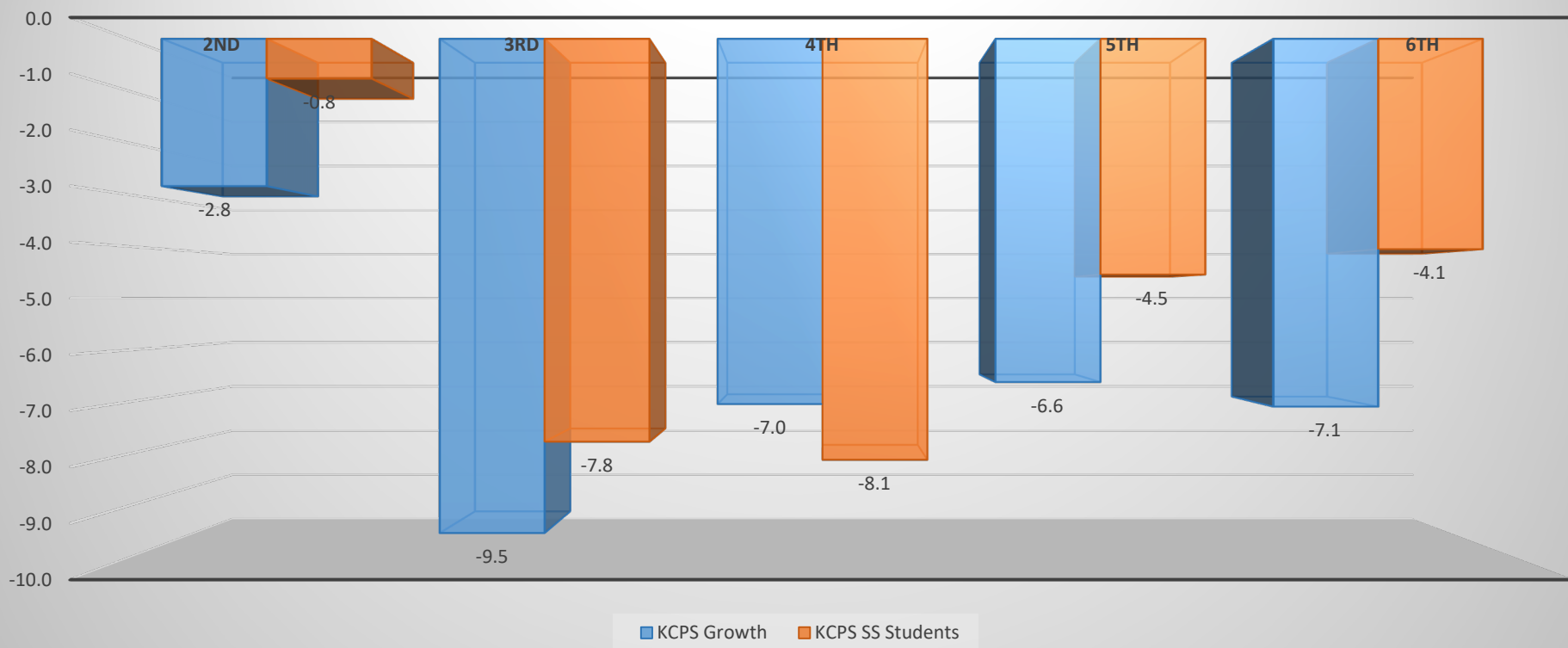


# 2017 Summer Partners:



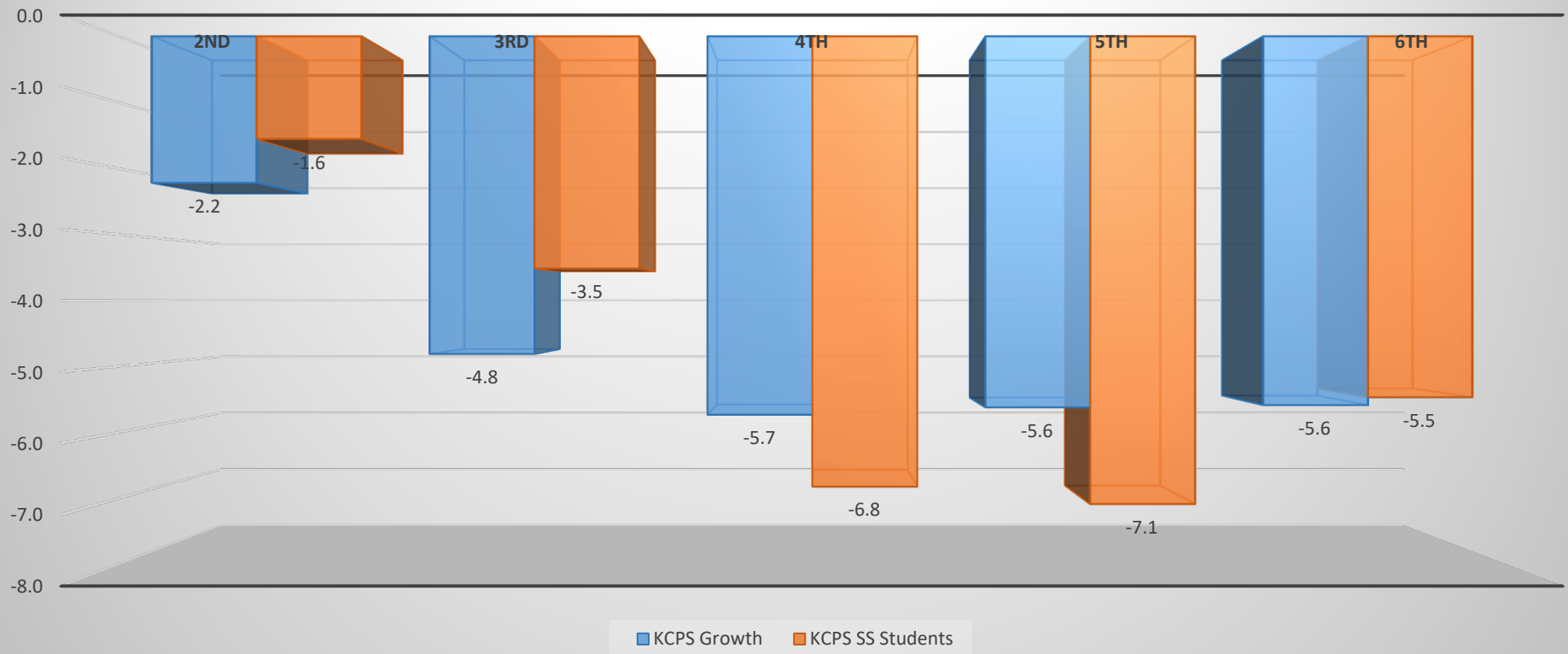
# Past Impact on Math (Summer 2016):

Spring SY16 to Fall SY17 NWEA RIT Growth Mathematics



# Past Impact on Reading (Summer 2016):

Spring SY16 to Fall SY17 NWEA RIT Growth Reading





# Professional Development Plan:

- PD focused on grouping students based on pre-test data
- Instructional intervention plans driven from pre-assessments
- Options in the curriculum for retention, enrichment, and interest



# Plan For Monitoring Instruction:

- Principals will conduct walk-throughs daily
- Principals will enter their observations into a Google form
- Feedback will be provided to summer partners



## 2017 Summer School Walk Through Checklist

School/Site \_\_\_\_\_ Date \_\_\_\_\_ Observer \_\_\_\_\_

<b>Certified Teacher:</b>	<b>Room #:</b>		
<b># of Students Present:</b>	<b>Time: Entry</b>		<b>Exit</b>
<b>Characteristics</b>	<b>Strong</b>	<b>Average</b>	<b>Low</b>
There was evidence that the district curriculum was implemented.			
Learning objectives are shared with the student (Verbally and Visually).			
Instructional activity is aligned with the learning objective.			
Lesson and tasks emphasized higher-order thinking and the lesson resulted in student learning.			
Teacher actively facilitated the lesson and assisted the students.			
The teacher conveyed high expectations for learning.			
The teacher effectively drew disengaged students into instruction.			
The teacher appeared confident and knowledgeable about the content.			
The teacher made the lesson relevant to the students' life experiences.			
The teacher interacted positively with other students.			
There was evidence that student feedback was used to adjust the lesson.			
The teacher provided specific and timely feedback to students.			

### Teacher Activity:

\_\_\_\_ Facilitates Discussion      \_\_\_\_ Monitors seatwork      \_\_\_\_ Lecture  
\_\_\_\_ Promotes hands-on learning      \_\_\_\_ Utilizes grouping      \_\_\_\_ Utilizes technology

**Students:** \_\_\_\_\_ **# Actively Engaged:** \_\_\_\_\_ **# Passively Engaged:** \_\_\_\_\_ **# Not Engaged:** \_\_\_\_\_

# Questions?



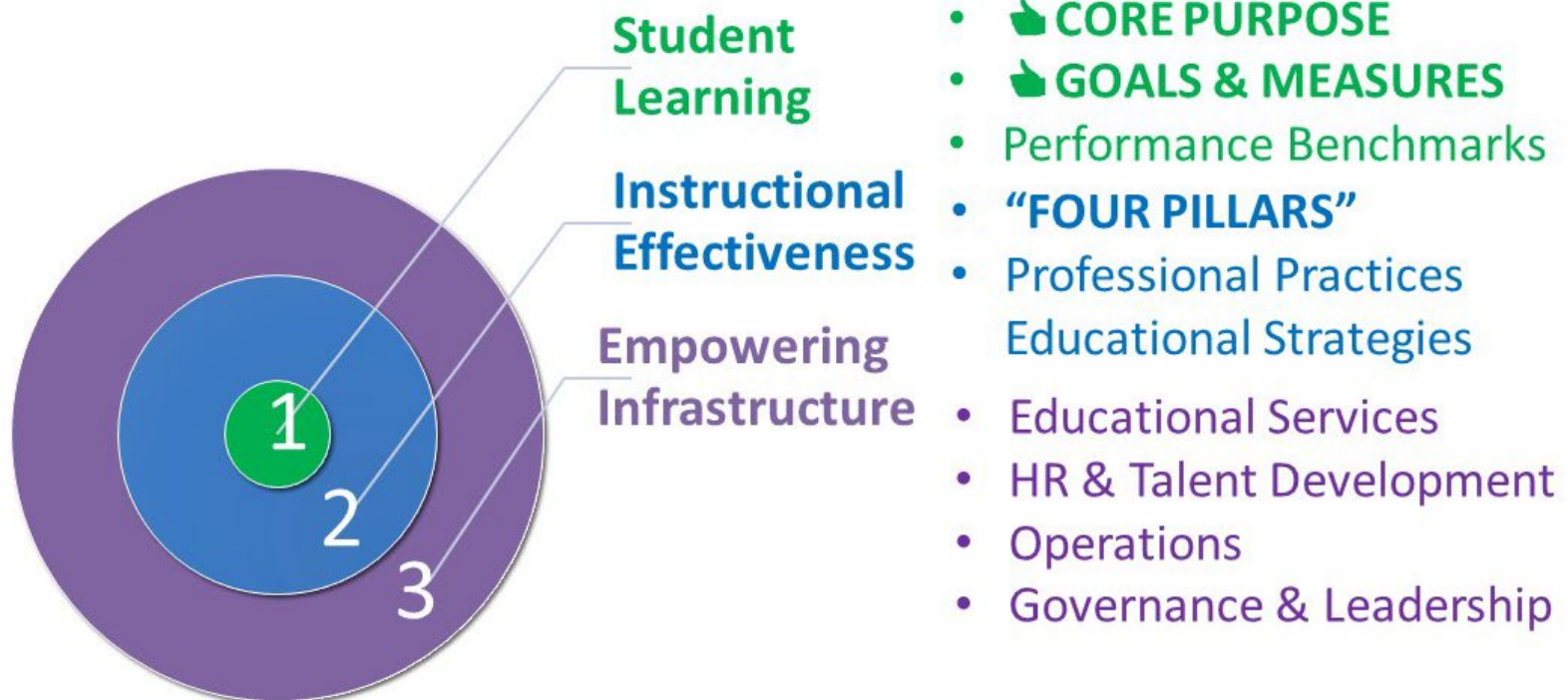
# Strategic Plan Progress Report

Mr. Jesse Lange



# Strategic Plan Update

Outputs: *What have we done to-date?*



# Strategic Plan Update

## 5 Goals & Measures for Student Success

	Goals	Measures
1	<b>Success in the early years</b>  Every student will receive the social-emotional, cognitive, health and community support necessary to be successful by the end of 3rd grade.	a. Increased percentage of Kindergartners who have pre-kindergarten experiences. b. Increased percentage of students from each student subgroup meeting or exceeding standards in English Language Arts and Mathematics by the end of third grade. c. Increased percentage of children engaged in socially and developmentally appropriate play in their early years and through Kindergarten. d. Increased percentage of students demonstrating acquisition of vocabulary, oral language, and conversational skills. e. Increased percentage of students who demonstrate persistence and confidence in social, emotional, and problem solving skills. f. Decreased number of children who start Pre-kindergarten or Kindergarten with undetected and untreated conditions or delays that impede learning.
2	<b>Whole Child: Safe, challenged, and supported</b>  Every student will be challenged and supported within a safe learning environment to be a responsible and productive citizen capable of meeting high expectations.	a. Increased percentage of students participating in at least 90% of classroom instructional time. b. Increased percentage of students who feel safe, have a sense of belonging, and personally meaningful friendships. c. Increased percentage of students who feel their school offers a safe environment for learning. d. Increased percentage of students who feel class and school norms are consistently and equitably enforced. e. Increased percentage of students engaged in constructive peer/group relationships. f. Increased percentage of students who receive effective social and emotional behavior intervention and receive continuous access to an advocate/mentor/counselor. g. Increased percentage of students participating in athletics or other extra-curricular/co-curricular activities.



# Strategic Plan Update

## 5 Goals & Measures for Student Success

3	<p><b>Continuous growth toward mastery of all academic subjects</b></p> <p>Every student will progress at a pace that closes the achievement gap, and will meet or exceed academic standards in academic subjects.</p>	<ul style="list-style-type: none"> <li>a. Increased percentage of students meeting proficiency standards on quarterly and state examinations.</li> <li>b. Increased percentage of identified students who move up or out of tiered academic support (e.g., Multi-Tiered Systems of Support; Problem-solving Team)</li> <li>c. Decreased achievement gap across all student-groups (within district and relative to similar schools/districts).</li> <li>d. Increased growth rate by a minimum of one year for students at/above grade level and 1.5 years for students below grade level.</li> <li>e. Increased percentage of Special Education students meeting their Individualized Education Plan (IEP) goals.</li> </ul>
4	<p><b>21<sup>st</sup> Century critical thinkers and problem-solvers</b></p> <p>Every student will demonstrate globally competitive creative thinking and innovation through effective reasoning, communication, and advocacy for themselves and their community.</p>	<ul style="list-style-type: none"> <li>a. Increased percentage of students applying learning to real-world situations.</li> <li>b. Increased percentage of students who can solve real-world, interdisciplinary problems.</li> <li>c. Increased percentage of students who justify a stand or decision with supporting evidence.</li> <li>d. Increased percentage of students who can use appropriate digital tools and resources to plan and conduct research, manage projects, solve problems, and make informed decisions.</li> <li>e. Increased percentage of students scoring "meet standards/proficient" or higher on performance standards.</li> </ul>
5	<p><b>Readiness for college, career, and life</b></p> <p>Every student will graduate from high school with a post-secondary plan and the experiences and preparation to execute that plan successfully after high school.</p>	<ul style="list-style-type: none"> <li>a. Increased percentage of students with school attendance of at least 90%.</li> <li>b. Increased percentage of 9th grade students on-track for graduation.</li> <li>c. Increased percentage of students who complete courses, activities, and experiences based on college and career interests.</li> <li>d. Increased percentage of seniors with a Career Plan Letter outlining at least one of these: college acceptance, military, trade/technical training, industry certification/apprenticeship.</li> <li>e. Decreased 4-year high school dropout rates.</li> <li>f. Increased 4-year high school graduation rates.</li> </ul>

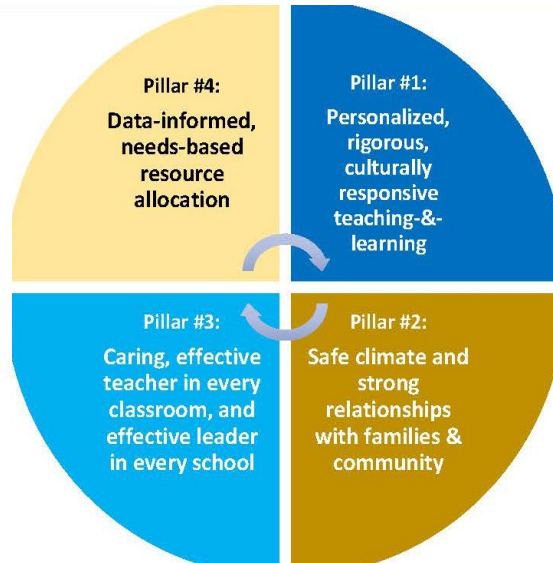
# Strategic Plan Update

## *Strategic Priorities for Pillar #4:*

- 4.1** Planning, accountability and continuous improvement
- 4.2** Equitable allocation of resources
- 4.3** Sustained public trust and commitment

## *Strategic Priorities for Pillar #3:*

- 3.1** Attracting, developing and retaining talented staff
- 3.2** Efficacy and winning mindset for all
- 3.3** Standards-based, differentiated professional development for all



## *Strategic Priorities for Pillar #1:*

- 1.1** Standards-aligned instructional system
- 1.2** Student-centered relationship and learning climate
- 1.3** Personalization and successful transitions

## *Strategic Priorities for Pillar #2:*

- 2.1** System of supports for students and families
- 2.2** Family and community engagement and partnerships
- 2.3** Excellence in customer service



# Strategic Plan Update

## Next Steps

- Continued Engagement with Stakeholders
- Finalize Strategic Plan
- Submission to the Board (June 28)
- Develop Action Plan, identify roles/responsibilities

# Questions?



# Academic Data Update

Dr. Trinity Davis



# 2017 Preliminary English Language Arts Results

## Preliminary EOC Scores SY 2013 - SY 2017 Fall and Spring EOC Testing English II

	2013 MPI	2014 MPI	2015 MPI	2016 MPI	2017 MPI		2013 Stdts	2014 Stdts	2015 Stdts	2016 Stdts	2017 Stdts
ACE Collegium At S.E. 7-12	322.1	343.4	341.3	314.63	N/A		86	76	63	41	NA
Central Academy of Excellence	273.6	288.3	297.8	294.17	269.7		110	128	137	120	99
East High School	312.6	343.6	339.2	315.38	287.9		143	133	148	195	165
Lincoln College Prep.	420.3	433.6	418.5	414.84	416.9		123	152	151	155	160
Northeast High	300.0	313.7	310.7	323.28	279.9		132	146	168	116	144
Paseo Acad. Of Performing Arts	336.1	370.2	328.6	325.71	353.7		97	94	91	35	54
Southwest Early College Campus	297.2	304.7	328.4	288.41	N/A		107	106	88	69	NA
Southeast High School	N/A	N/A	N/A	N/A	265.5		N/A	N/A	N/A	N/A	148
KCPS	323.6	344.3	338.9	332.15	311.2		798	835	846	731	770

# 2017 Preliminary Algebra I Results

## Preliminary EOC Scores SY 2013 - SY 2017 Fall and Spring EOC Testing Algebra I

	2013 MPI	2014 MPI	2015 MPI	2016 MPI	2017 MPI		2013 Stdts	2014 Stdts	2015 Stdts	2016 Stdts	2017 Stdts
ACE Collegium At S.E. 7-12	272.9	292.0	260.3	256.4	N/A		96	50	78	39	N/A
Central Academy of Excellence	228.4	234.5	274.7	231.6	184.4		148	119	95	155	77
Central Middle School	N/A	N/A	N/A	400.0	375.9		N/A	N/A	N/A	21	29
East High School	310.1	303.2	349.1	305.2	325.6		257	155	216	174	164
Foreign Language Academy	407.4	404.2	423.8	450.0	455.0		27	24	21	20	20
Lincoln College Prep.	414.9	430.3	411.9	369.3	414.4		181	142	101	150	139
Northeast High	248.2	258.0	276.4	233.6	212.0		112	119	106	113	133
Northeast Middle School	N/A	N/A	N/A	375.0	377.8		N/A	N/A	N/A	24	36
Paseo Acad. Of Performing Arts	252.8	257.3	312.2	216.3	206.3		108	96	90	123	32
Southwest Early College Campus	235.8	253.7	237.1	237.3	N/A		120	95	62	51	N/A
Southeast High School	N/A	N/A	N/A	N/A	168.4		N/A	N/A	N/A	N/A	136
<b>KCPS</b>	<b>294.8</b>	<b>299.8</b>	<b>317.8</b>	<b>282.6</b>	<b>282.6</b>		<b>1049</b>	<b>800</b>	<b>769</b>	<b>870</b>	<b>766</b>

# 2017 Preliminary Algebra II Results

## *Preliminary EOC Scores SY 2013 - SY 2017 Fall and Spring EOC Testing Algebra II*

	<i>2015 MPI</i>	<i>2016 MPI</i>	<i>2017 MPI</i>	<i>2015 Stdts</i>	<i>2016 Stdts</i>	<i>2017 Stdts</i>
<i>ACE Collegium At S.E. 7-12</i>	100.0	100.0		3	4	
<i>Central Academy of Excellence</i>	250.0	200.0	157.1	2	4	7
<i>East High School</i>	388.9	348.3	321.4	18	29	28
<i>Lincoln College Prep.</i>	280.4	274.3	351.3	153	171	152
<i>Northeast High</i>	175.0	230.8	210.3	8	13	39
<i>Paseo Acad. Of Performing Arts</i>	220.0	233.3	178.6	5	6	14
<i>Southwest Early College Campus</i>	100.0	100.0		0	1	
<i>Southeast High School</i>			242.9			7
<b>KCPS</b>	<b>281.5</b>	<b>275.0</b>	<b>307.3</b>	<b>189</b>	<b>228</b>	<b>247</b>

# 2017 Preliminary American Government Results

## Preliminary EOC Scores SY 2013 - SY 2017 Fall and Spring EOC Testing Government

<b>School</b>	<b>2013 MPI</b>	<b>2014 MPI</b>	<b>2015 MPI</b>	<b>2016 MPI</b>	<b>2017 MPI</b>		<b>2013 Stdts</b>	<b>2014 Stdts</b>	<b>2015 Stdts</b>	<b>2016 Stdts</b>	<b>2017 Stdts</b>
ACE Collegium At S.E. 7-12	240.3	267.7	301.7	300.0	N/A		77	65	60	38	N/A
Central Academy of Excellence	228.6	211.2	240.7	241.1	244.5		84	107	113	107	119
East High School	297.9	303.8	313.5	336.0	320.7		140	132	155	172	208
Lincoln College Prep.	378.7	407.4	402.2	408.5	400.0		178	136	139	211	134
Northeast High	217.6	194.9	231.7	230.8	227.1		131	98	167	156	170
Paseo Acad. Of Performing Arts	325.0	326.6	340.0	352.4	318.0		76	79	85	63	133
Southwest Early College Campus	210.9	223.2	280.3	262.0	N/A		129	82	117	79	N/A
Southeast High School	N/A	N/A	N/A	N/A	266.7		N/A	N/A	N/A	N/A	171
<b>KCPS</b>	<b>278.8</b>	<b>284.3</b>	<b>299.3</b>	<b>314.9</b>	<b>295.1</b>		<b>815</b>	<b>699</b>	<b>836</b>	<b>826</b>	<b>935</b>





# 2017 Preliminary Biology Results

## Preliminary EOC Scores SY 2013 - SY 2017 Fall and Spring EOC Testing Biology

	2013 MPI	2014 MPI	2015 MPI	2016 MPI	2017 MPI		2013 Stdts	2014 Stdts	2015 Stdts	2016 Stdts	2017 Stdts
ACE Collegium At S.E. 7-12	281.6	239.3	282.2	219.1	N/A		49	84	90	47	N/A
Central Academy of Excellence	279.0	213.5	243.6	224.4	217.8		81	133	149	119	107
East High School	269.7	268.7	298.0	248.5	301.3		145	150	204	206	155
Lincoln College Prep.	399.4	391.5	406.7	380.4	393.2		162	164	164	168	206
Northeast High	244.7	258.9	262.6	241.9	234.3		123	146	174	105	181
Paseo Acad. Of Performing Arts	355.7	322.7	341.8	242.2	291.6		70	88	79	64	83
Southwest Early College Campus	239.6	241.5	267.8	230.8	N/A		91	82	90	65	N/A
Southeast High School	N/A	N/A	N/A	N/A	222.9		N/A	N/A	N/A	N/A	118
<b>KCPS</b>	<b>301.0</b>	<b>282.2</b>	<b>301.1</b>	<b>268.7</b>	<b>286.9</b>		<b>721</b>	<b>847</b>	<b>950</b>	<b>774</b>	<b>850</b>





# Questions?



# **Summary of Anticipated July 1 Operating Budget Results**

**Mrs. Erin Thompson**



# KANSAS CITY PUBLIC SCHOOLS

## PROJECTED REVENUE AND ACTUAL EXPENDITURES & OBLIGATIONS

### FISCAL YEAR 2016-2017

	Budget	Projected	Variance	
	<u>Amendment II</u>	<u>Actual/Obligations</u>	<u>\$</u>	<u>%</u>
REVENUE				
Local	183,956,902	183,956,902	-	0%
County	5,199,346	5,199,346	-	0%
State	15,453,869	15,453,869	-	0%
Federal	<u>41,956,149</u>	<u>41,956,149</u>	<u>-</u>	<u>0%</u>
TOTAL REVENUE	<u>246,566,266</u>	<u>246,566,266</u>	<u>-</u>	<u>0%</u>

# KANSAS CITY PUBLIC SCHOOLS

## PROJECTED REVENUE AND ACTUAL EXPENDITURES & OBLIGATIONS

### FISCAL YEAR 2016-2017

	Budget <u>Amendment II</u>	Projected <u>Actual/Obligations</u>	<u>Variance</u>	
			<u>\$</u>	<u>%</u>
EXPENDITURES				
Administration	5,316,982	5,834,131	(517,149)	-10%
Instruction	130,560,282	132,985,807	(2,425,525)	-2%
Support Services	51,461,713	48,611,331	2,850,382	6%
Plant Services	26,171,554	26,995,533	(823,979)	-3%
Pupil Transportation	16,054,432	15,316,886	737,546	5%
Community & Adult Services	4,446,704	4,002,210	444,494	10%
Debt Service	8,374,707	8,374,707	-	0%
TOTAL EXPENDITURES	<u>242,386,374</u>	<u>242,120,604</u>	<u>265,770</u>	<u>0%</u>
REVENUE over EXPENDITURES	<u>4,179,892</u>	<u>4,445,662</u>	<u>(265,770)</u>	<u>-6%</u>

# KANSAS CITY PUBLIC SCHOOLS

## PROJECTED REVENUE AND ACTUAL EXPENDITURES & OBLIGATIONS

### FISCAL YEAR 2016-2017

	Budget <u>Amendment II</u>	Projected <u>Actual/Obligations</u>	<u>Variance</u>	
			<u>\$</u>	<u>%</u>
FUND BALANCE:				
Beginning Fund Balance	66,416,444	66,416,444	-	0%
Less: Fund Balance Designation *	<u>(3,753,162)</u>	<u>(3,753,162)</u>	-	0%
Net Beginning Fund Balance	<u>62,663,282</u>	<u>62,663,282</u>	-	0%
Ending Fund Balance	66,843,174	67,108,944	(265,770)	0%
Less: Restricted Fund Balance **	<u>(21,626,291)</u>	<u>(21,626,291)</u>	-	0%
GENERAL FUND BALANCE	<u><u>45,216,883</u></u>	<u><u>45,482,653</u></u>	<u><u>(265,770)</u></u>	<u><u>-1%</u></u>

*\* Reserved for Technology Plan, Cafeteria Equipment/Upgrades, Retirement Incentives and Bond reimbursement for capital projects.*

*\*\* Restricted for Operating Capital Projects, Health Insurance, Workers Compensation, Grants & Child Nutrition.*

# Questions?



# **Human Resources Update and Plan for 2017-18**

**Dr. Anthony Lewis**



# Retention Rate of Teachers/Principals SY17

	Total # of Teachers	Total # of teachers to depart	% to Return for next school year	Total # of Principals	Total # of Principals to depart	% to return for next school year
SY16	1196	169 (38)	86%	36	8	78%
SY17	1122	199 (38)	83% (retirement incentive)	33	6	82%





# Teacher Outlook for 2017-2018

- 79% of teachers are returning for the 2017-2018 school year
- 96 teacher hires made for the 2017-2018 school year
- 29 remaining teacher vacancies for 2017-2018 school year
  - 17 Secondary
  - 21 Elementary
  - On June 1, 2016 (last year) we had 69 remaining vacancies



# Principal Outlook for 2017-2018

- 82% of principals are returning
- 5 out of 6 new principals hired for SY17 are returning
- 5 out of 6 vacancies for SY 18 are filled

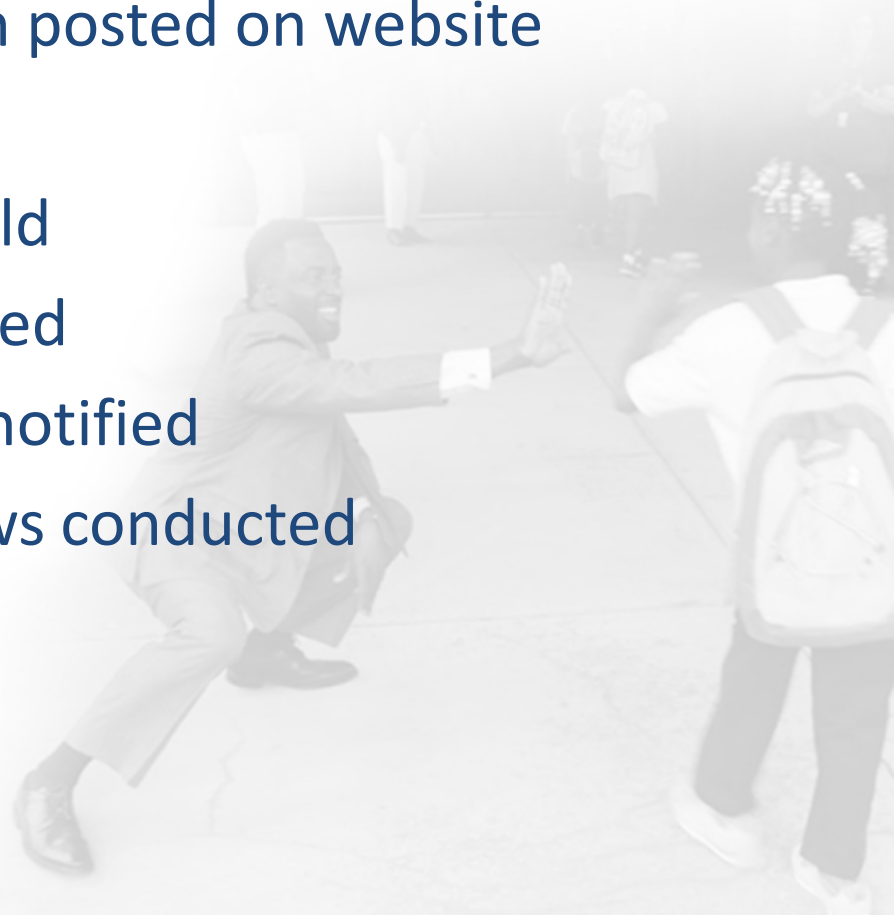


# Current Principal Vacancies

- Wheatley Elementary School - TBD
- Rogers Elementary School – Pending Board Approval
- Longfellow Elementary School – Pending Board Approval
- Central Middle School – Pending Board Approval
- Southeast High School – Superintendent Placement
- Paseo Academy of the Performing Arts – Board Approved

# Principal Selection Process

- Principal position posted on website
- Search committee application posted on website
- Teacher input meeting held
- Community input meeting held
- Screening interviews conducted
- Search committee members notified
- Principal committee interviews conducted



# Principal Selection Process

- Top two candidates recommended
- Top two candidates interviewed by Superintendent
- Board of Directors approve candidate
- New principal introduction to community



# Questions?



# **Planning for Launching of School August 2017**

**Ms. Natalie Allen and Dr. Trinity Davis**





# Opening of School Events

- Summerfest
- New Teacher Week
- Returning Teacher Week
- Convocation





# Summerfest: August 5<sup>th</sup>

- Students and families meet their principals
- Receive free backpacks, haircuts, immunizations, uniforms, physicals and more
- Receive information about the upcoming school year
- Participate in games, activities, build community
- KCPS Education Foundation sponsors—we are slated to have nearly \$45,000 in donations this year



# New Teacher Week: July 31-August 4

- Day 1: Breakfast with Principals
- Day 1: Human Resources/IT
- Day 2: Curriculum
- Day 3: District Resources Professional Development
- Day 4: Creating a Positive Classroom Environment
- Day 5: Report to Schools



# Returning Teacher Week: August 7-11

Monday	Tuesday	Wednesday	Thursday	Friday
<ul style="list-style-type: none"><li>• Principal .5</li><li>• Workday .5</li></ul>	<ul style="list-style-type: none"><li>• Curriculum &amp; Instruction</li></ul>	<ul style="list-style-type: none"><li>• Workday</li></ul>	<ul style="list-style-type: none"><li>• Principals .5</li><li>• Convocation</li></ul>	<ul style="list-style-type: none"><li>• Teachers Do Not Report</li></ul>





# Convocation: August 10<sup>th</sup>

- Coming together of all staff at Music Hall downtown
- Schools get recognized and show off school spirit
- Dr. Bedell gives speech to pump everyone up
- Keynote address is made in order to focus on the upcoming year—this year's theme is “Built for This”



# Questions?



# Central Office Leadership Replacement Plan

Dr. Mark Bedell

KANSAS CITY

PUBLIC SCHOOLS



# Central Office Leadership Replacement Plan

Position	Date Posted	Initial Interview date	Second Interview date	Candidate Selected	Start Date
Chief Financial Operations Officer	1/8	2/28 (3 candidates)	3/10 (2 candidates)	Linda Quinley	July 1, 2017
Deputy Superintendent	1/25	3/24 (3 candidates)	N/A	Dr. Marla Sheppard	July 1, 2017
Chief Legal Counsel	2/6	3/15 (4 candidates)	N/A	Mr. Ivan Nugent, Esq.	April 10, 2017

# Central Office Leadership Replacement Plan

Position	Date Posted	Initial Interview date	Second Interview date	Candidate Selected	Start Date
Assistant Superintendent of School Leadership	3/22	5/11 (4 candidates)	6/6 (2 candidates)	TBD	July 1, 2017
<b>Chief Research and Accountability Officer Selection/ Hiring Process</b>					
Secured Search Firm (On-Ramps)	(On Ramps) Phone interviews	30 minute skype interviews	30 minute skype interview	Face-to-Face Interview w/ Finalists	Start Date
		2/25 (3 candidates)	3/31 (1 candidate)	6/7 (2-3 candidates)	July 1, 2017



**Questions?**



# RSIT Breakout Discussion



## Feedback/Requests



## Monthly Meeting Date

