

The logo for the Missouri School Boards' Association (MSBA) features the acronym "MSBA" in a large, bold, dark blue sans-serif font. Below it, the full name "MISSOURI SCHOOL BOARDS' ASSOCIATION" is written in a smaller, dark blue sans-serif font, following the curve of the acronym. The text is set against a white background with several colorful geometric elements: a teal line, an orange line, a yellow line, and a red rectangle on the left; and a yellow rectangle, a teal line, a purple line, and a green line on the right. The entire graphic is tilted at an angle.

# MSBA

MISSOURI SCHOOL BOARDS' ASSOCIATION



# **Roles and Responsibilities of the School Board**

**Janet Tilley**

**Senior Director of Board Development**

**Missouri School Boards' Association**

**[tilley@mosba.org](mailto:tilley@mosba.org)**



# What Is a School Board?

---

- A governing body, elected by the citizens of the district, with statutory authority to provide governance leadership for the district
- Leader and champion for public education in the community
- Serve the interests of all students, not a subgroup or specific groups of students



# Collective Authority

- **No Individual Authority**
  - Authority rests with the whole Board
  - No individual board member has legal authority to request action from the staff, change policies, or direct operations
  - Support the Board once a decision has been made by a majority vote
- **Colombo v. Buford, 935 S.W.2d 690(1996)**
  - “Unless otherwise authorized by the Board, individual members are not empowered to act and cannot govern.”

# From Citizen to Board Member

Speak as an individual	Convey the Board's decision and message with one voice
Commiserate about issues & intervene	Direct concerns via chain of command
Respond with opinion, personal experience or anecdotal information	Respond in accordance with policy based on district level data
Respond immediately	Respond as a Board after due diligence & policy guidance
Personal communication	Public communications

# Balanced Leadership Roles

## Boards Provide Governance Leadership

- The board acts with their votes and **Governing Documents**
- Board focus on the “**what**” or the “**ends**”
- The **Board** provides direction for the Superintendent

## Superintendent Provides Administrative Leadership

- Superintendent acts through **Procedures**
- Superintendent determines the “**how**” or the “**means**”
- The **Superintendent** provides direction for the staff



# The School Board's View





# The School Board's View





# What Does a Board Do?

## Board Responsibilities

- Clarify purpose
- Approve annual budget
- Collaborate with superintendent and delegate authority
- Employ and evaluate superintendent
- Monitor district performance
- Connect with the community
- Demonstrate ethical and legal governance

## Governing Documents

- School Board Policy
- Strategic Plan
- Budget
- Superintendent Evaluation
- Professional Development Plan
- Board Meeting Agenda



# School Board Member Ethics

- Ensure first and primary concern is the educational welfare of all students
- Obey the laws of Missouri and the United States
- Recognize that an individual board member has no authority to speak or act for the board
- Work with other board members to establish effective board policies



# **School Board Member Expectations**

---

- Delegate authority for the administration of the schools to the superintendent
- Encourage ongoing communications between board members and stakeholders
- Make every effort to attend all board meetings, work sessions, trainings, and designated district and community events



# School Board Member Expectations

- Support employment of staff based on qualifications and not as a result of influence
- Support a process of regular & systematic assessment of the education system to provide accountability for the district
- Improve board governance by studying educational issues & by participating in in-service programs and training





# School Board Member Expectations

- Avoid conflicts of interest or the appearance thereof
- Refrain from using board position for the benefit of family members, business associations or for personal gain
- Express personal opinions but, once board has acted, accept will of the majority
- Refrain from divulging confidential information



# Am I Ready?

---

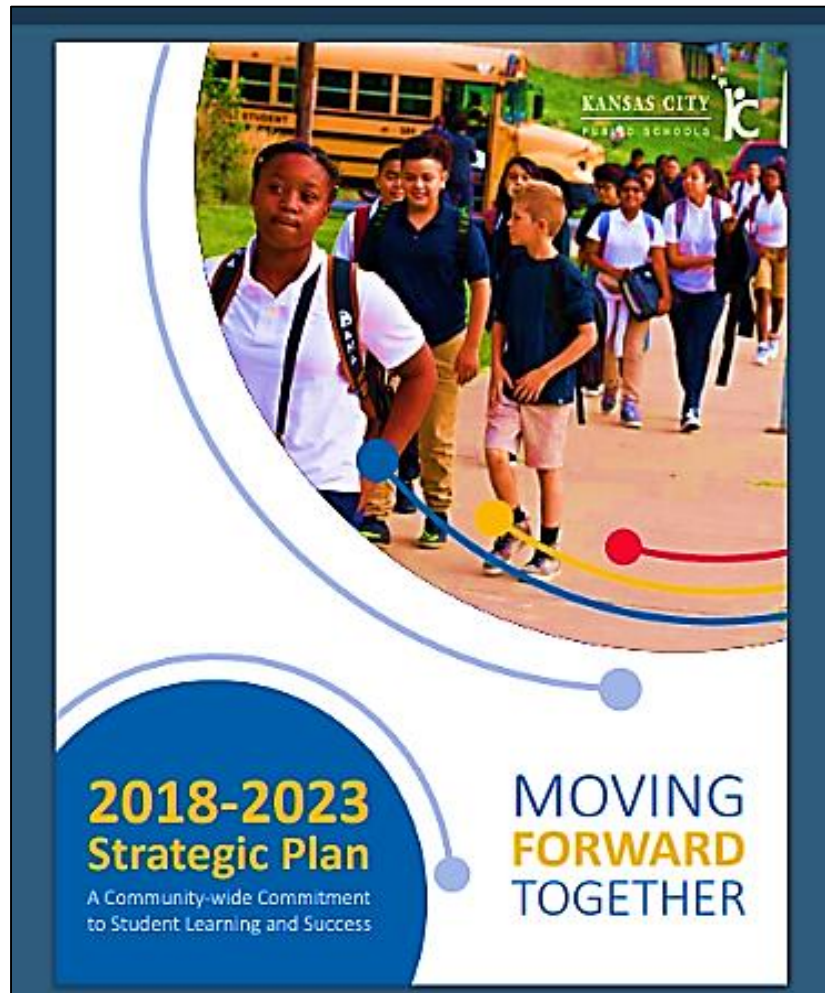
- Commitment to serve every student in the district
- Ready to make the commitment in time
  - Meeting preparation and attendance
  - Local expectations of board members at district and community events
  - 18.5 hours of training required by law
  - Annual refresher training (1 hour)
- Ability to work as a member of a team
- Able to withstand public scrutiny

# Next Steps: KCPS Operations

- View upcoming school board meetings and/or view videos of prior meetings
- Become familiar with KCPS District Plans and Initiatives
  - <https://www.kcpublicschools.org/about/district-plans-initiatives/~board/kcps-publications/post/strategic-plan-scorecards-and-progress-reports>



# KCPS Strategic Plan and Updates



## STRATEGIC PLAN END OF YEAR PROGRESS REPORT IT'S OUR TIME! 2019-20 School Year Key Actions



Dr. Mark Bedell, Superintendent  
October 2020





# KCPS Scorecard

## KANSAS CITY PUBLIC SCHOOLS SCORECARD STUDENT GOALS & MEASURES

### GOAL 1: SUCCESS IN THE EARLY YEARS

GOAL 1A: Percentage of K students with PK experience



GOAL 1B: Percentage of students from each subgroup who meet/exceed ELA & Math standards



GOAL 1C: Percentage of students with persistent & confident in social, emotional, problem

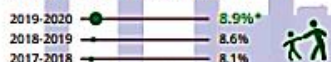


### GOAL 2: WHOLE CHILD: SAFE, CHALLENGE AND SUPPORTED

GOAL 2A: Percentage of students who feel school environment is safe for learning & have personally meaningful friendships



GOAL 2B: Percentage of students receiving effective social and emotional behavior intervention access to advocate, mentor, counselor



GOAL 2C: Percentage of students participating in athletics or other extra-/co-curricular activities



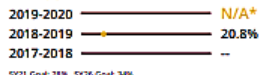
\*Not available due to limitations associated with COVID-19

### GOAL 3: CONTINUOUS GROWTH TOWARD MASTERY OF ALL ACADEMIC SUBJECTS

GOAL 3A: Percentage of students meeting proficiency standards on state, local, national exams



MAP SCI

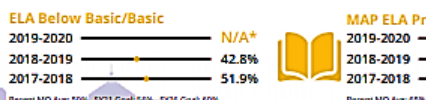


NOTE: Scores are not directly comparable due to changes in state assessments

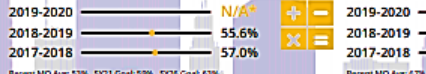
GOAL 3B: Percentage of students moved up/out of tiered academic support



GOAL 3C: Growth rate by min. 1 yr for students ≥ grade level & 1.5 yr for students



Math Below Basic/Basic



Math Proficient



\*Not available

## KANSAS CITY PUBLIC SCHOOLS SCORECARD STUDENT GOALS & MEASURES

### GOAL 4: 21ST CENTURY CRITICAL THINKERS AND PROBLEM SOLVERS

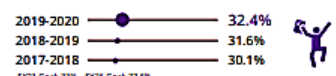
GOAL 4A: Percentage of students who can solve real-world, interdisciplinary problems



GOAL 4B: Percentage of students who can use digital tools & resources to plan/conduct research, manage projects, solve problems, make informed decisions

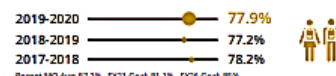


GOAL 4C: Percentage of students who met standards on performance-based assessments



### GOAL 5: READINESS FOR COLLEGE, CAREER AND LIFE

GOAL 5A: Percentage of students with attendance ≥ 90%



GOAL 5B: Percentage of students who completed courses, activities, & experiences based on college & career plan



GOAL 5C: Percentage of students meeting proficiency standards on state, local, national exams



\*Not available due to limitations associated with COVID-19

# KCPS Blueprint 2030





## Janet Tilley



573-445-9920 ext. 379 | 800-221-6722



[tilley@mosba.org](mailto:tilley@mosba.org)



2100 I-70 Drive Southwest  
Columbia, MO 65203



[www.mosba.org](http://www.mosba.org)